

RACING HEAD SERVICE™

Racing Head Service™ - a dominant force in the history of cylinder head technology - is back with a vengeance! Utilizing the acquired resources of Pro TopLine cylinder heads in combination with the industry's largest engineering team and the most advanced cylinder head manufacturing foundry in the world, RHS™ has re-emerged as the performance cylinder head leader - right out of the box.



RACING HEAD SERVICE™ Out Of The Box Performance

Pro TopLine cylinder heads are now known as RHS. In combination with the industry's largest engineering team and the most advanced cylinder head manufacturing foundry in the world, RHS™ has re-emerged as the performance cylinder head leader. Incorporating an advanced "vertically integrated" manufacturing process, RHS™ executes cylinder head creation - from concept through final machining - all in one location.

Gone are the days of purchasing new cylinder heads only to discover that extensive final machining is required for optimum performance. RHS™'s unique manufacturing process ensures that chamber and runner volumes, port-to-chamber surface transitions and related design features hold extreme tolerances - achieving "as cast" standards not possible with traditional manufacturing.



PRO ACTION™ - 23° Small Block Chevy

Ready to go right out of the box. These heads all feature bronze guides, multi-angled inlet and radius exhaust with ductile iron seats. These accept standard rockers and valve train components, and 1.550" springs.

PRO ACTION™ - Big Block Chevy

RHS BB Chevy heads are tremendous performers for street, drag race, and powerboat applications. These heads offer more features, higher flow characteristics and better finishing quality- ultimately yielding more HP for your big block Chevy.

PRO ACTION™ - Small Block Ford Windsor

RHS brings advanced engineering, proven performance, and unsurpassed finishing quality to Small Block Ford Windsor and 5.0L engine applications. These heads accept all original equipment and aftermarket performance parts, making installation and assembly simple.

PRO TORKER™ - Small Block Chevy

Pro Torker™ Vortec heads outflow all previously available SB Chevy iron cylinder heads. Made from premium-quality cast iron using our patented Clean Cast Technology™, Pro Torker™ heads deliver the competitive edge in racing classes where iron heads are required.

PRO ELITE™ GM Gen III LS1/LS2/LS6 (Full CNC)

The Gen III cylinder heads are fully CNC-machined for consistent quality and superb airflow. Pro Elite Gen III heads have a rolled-over 11° valve angle for increased piston-to-valve clearance, velocity and atomization over the stock 15° angle and a valve cover rail that has been raised .500" allowing for higher port roofs and for aftermarket rocker systems to be used with stock valve covers without a spacer. Pro Elite Gen III headers will accept all popular Gen III intake manifolds, including the FAST LSX.



PRO ACTION™ 23° SMALL BLOCK CHEVY

FLAT TAPPET HYD. ROLLER						
BARE	ASSEMBLY	ASSEMBLY		DESCRIPTION	VALVE SIZES	APPLICATION
12029	12029-01	12029-02	ALUM	220cc Runner 64cc Chamber-Angle	2.020"/1.600"	Max Street Perf./Oval Track/Drag 383-400c.i.
12032	12032-01	12032-02	ALUM	235cc Runner 64cc Chamber-Angle	2.080"/1.600"	Race Head Unlimited Oval/Drag 400c.i.
12317	12317-01	12317-02	IRON	180cc Runner 64cc Chamber-Straight	2.020"/1.600"	Street Perf. Up To 350c.i.
12319	12319-01	12319-02	IRON	200cc Runner 64cc Chamber-Straight	2.020"/1.600"	Street Perf./Short Track 327-350c.i.
12320	12320-01	12320-02	IRON	200cc Runner 64cc Chamber-Angle	2.020"/1.600"	Street Perf./Short Track 327-350c.i.
12322	12322-01	12322-02	IRON	220cc Runner 64cc Chamber-Angle	2.020"/1.600"	Max Street Perf./Oval Track/Drag 383-400c.i.
12324	12324-01	12324-02	IRON	235cc Runner 64cc Chamber-Angle	2.080"/1.600"	Race Head Unlimited Oval/Drag 400c.i.
12336	12326-01	12326-02	IRON	220cc Runner 50cc Chamber-Angle	2.020"/1.600"	Max Street Perf./Oval Track/Drag 383-400c.i.

PRO TORKER™ SMALL BLOCK CHEVY

12400	---	---	IRON	170cc Runner 76cc Chamber	1.940"/1.500"	Street Perf. Up To 350c.i.
12401	---	---	IRON	170cc Runner 76cc Chamber	2.020"/1.600"	Street Perf. Up To 350c.i.
12402	---	---	IRON	170cc Runner 67cc Chamber	1.940"/1.500"	Street Perf. Up To 350c.i.
12403	---	---	IRON	170cc Runner 67cc Chamber	2.020"/1.600"	Street Perf. Up To 350c.i.
12407	---	---	IRON	170cc Runner 64cc Chamber	1.940"/1.500"	Street Perf. Up To 350c.i.
12410	12410-01	12410-02	IRON	170cc Runner 64cc Chamber	2.020"/1.600"	Street Perf. Up To 350c.i.

PRO ELITE™ GM GEN III LS1/2/6 (FULL CNC)

54210	---	54210-02	ALUM	210cc Runner 62cc Chamber	2.040"/1.570"	High Street Performance/Strip
54225	---	54225-02	ALUM	225cc Runner 62cc Chamber	2.080"/1.600"	High Street Performance/Strip

PRO ACTION™ 24° Big Block Chevy

11001	---	11001-02	ALUM	320cc Runner 119cc Chamber	2.250" 1.880"	Street Performance
11002	---	11002-02	ALUM	360cc Runner 119cc Chamber	2.300" 1.880"	High Street Performance/Strip
11301	---	11301-02	IRON	320cc Runner 119cc Chamber	2.250" 1.880"	Street Performance

PRO ACTION™ SMALL BLOCK FORD WINDSOR

35005	35005-01	35005-02	ALUM	200cc Runner 58cc Chamber	2.020"/1.600"	High RPM Street/Race
35301	35301-01	35301-02	IRON	180cc Runner 64cc Chamber	2.020"/1.600"	Street 302-351c.i.



Edelbrock Cylinder Heads

Cast at the ultramodern Edelbrock Aluminum Foundry, Edelbrock heads are made from A356 aluminum and heat treated to T-6 specs. Our state-of-the-art manufacturing facility uses the latest CNC machining centers for high-degree of accuracy. Features for all Edelbrock heads include: threaded inserts in rocker studs and exhaust manifold bolt holes for superior strength and durability; hardened seats and bronze valve guides; minimum 9/16" deck thickness; fully machined valve cover rails for a more consistent gasket seal and all Edelbrock heads are designed to accept high-lift cams.



#60119

PERFORMER RPM HEADS for AMC/JEEP

Edelbrock now offers power and torque increases to owners of 1967-91 AMC and Jeep 343, 360/ 390, and 401 engines. Features an efficient 54cc dual-quench combustion chamber. A reconfigured intake valve seat angle improves mid-to high lift flow. Requires step washer kit for 1969 and earlier engines with 7/16" head bolts. No exhaust crossover port.

DESCRIPTION	PART NO.
AMC/Jeep 67-91 343, 360, 390, 401 - Complete	60119



#60899

PERFORMER RPM HEADS for Chevrolet

Designed for non-emissions 302, 327, 350 and 400 c.i.d. engines up to 1986, these heads made 420 horsepower with the Performer RPM Power Package for Small-Block Chevy's. Performer RPM heads with 64cc combustion chambers improve performance and retain stock compression ratio on 1970 and earlier small-blocks. Hardened pushrods are required.

DESCRIPTION	Polished	Standard Finish
SB Chevy Straight Plugs 64cc Chamber Size - Complete	608919	60899
SB Chevy Straight Plug 70cc Chamber Size - Complete	607319	60739
SB Chevy Angled Plug 64cc Chamber Size - Complete	---	60999
SB Chevy Angled Plug 70cc Chamber Size - Complete	607119	60719



#60759

PERFORMER HEADS for Small Block Chevy

Designed for pre-86 Chevy 302, 327, 350 and 400 engines. 50 state legal design includes an exhaust crossover passage for emissions capability. Features 170cc intake port and 60cc exhaust port volumes. Utilizes 1.60 and 2.02" valves and requires hardened pushrods.

DESCRIPTION	PART NO.
SB Chevy Street Legal Performer 70cc - Complete	60759
SB Chevy Street Legal Performer 64cc - Complete	60909

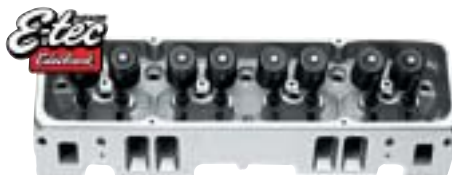


#60859

PERFORMER HEADS for Centerbolt Small Block Chevy

Performance improved for 1987-95 Chevy 5.7L engines (except LT1,LT4 and LT5) originally equipped with Centerbolt valve covers. Designed for the 87-up intake manifold bolt pattern and either TBI or Tuned Port Injection Systems. 165cc intake and 60cc exhaust ports.

DESCRIPTION	PART NO.
SB Chevy Centerbolt Straight plug 60cc Chamber Size - Complete	60859



#60989

E-TEC 200 HEADS for Small Block Chevy Vortec Engines

Edelbrock E-Tec heads fit 302, 327, 350, and 400 c.i.d. engines with Vortec style intake manifolds. E-Tec 200 heads have 200cc rectangular intake ports and 78cc exhaust. Accepts standard or centerbolt valve covers. Exhaust ports exit .200" higher than standard heads but work with most stock manifolds.

DESCRIPTION	PART NO.
E-Tec 200 for SB Chevy Vortec 64cc - Complete	60989



#61909

PERFORMER LT 1 HEADS for '92-'97 LT-1 Engines

Designed for the 1992-97 LT1 engines, these aluminum heads have specially designed 170cc intake and 60cc exhaust ports with increased valve sizes (1.94" intake, 1.55" exhaust) for maximum flow and performance. Combustion chamber volume is 54cc. Edelbrock Performer LT1 heads made 24 horsepower more than factory-stock LT1 heads and raised the peak power level by 500 rpm. Performer LT1 heads work with stock or aftermarket self-guiding roller rocker arms.

DESCRIPTION	PART NO.
'92-'97 LT 1 Engines - Complete	61909

Edelbrock Cylinder Heads

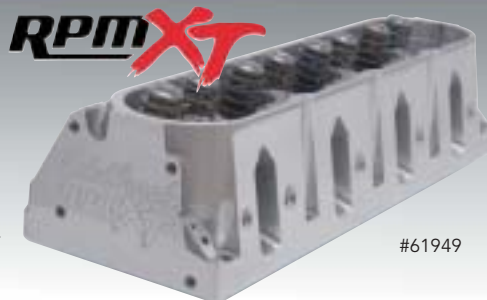
Cast at the ultramodern Edelbrock Aluminum Foundry, Edelbrock heads are made from A356 aluminum and heat treated to T-6 specs. Our state-of-the-art manufacturing facility uses the latest CNC machining centers for high-degree of accuracy. Features for all Edelbrock heads include: threaded inserts in rocker studs and exhaust manifold bolt holes for superior strength and durability; hardened seats and bronze valve guides; minimum 9/16" deck thickness; fully machined valve cover rails for a more consistent gasket seal and all Edelbrock heads are designed to accept high-lift cams.



RPM XTREME for LS Semi-CNC

Designed for 1997 and later GEN III LS Series engines, including 4.8L, 5.3L, 5.7L & 6.0L. CNC-ported 65cc combustion chambers with port matched and blended intake/exhaust ports. 212cc intake ports flow 275 cfm, 75cc exhausts flow 200 cfm.

DESCRIPTION	PART NO.
97-later GEN III LS 4.8L, 5.3L, 5.7L and 6.0L - Complete (single)	61949



#61949

RPM XTREME for LT4 Semi-CNC

Stock replacement for 1995-96 LT4 and performance upgrade for 1992-97 LT1 engines. Fully CNC machined 54cc combustion chambers retain the stock LT4 compression ratio of 10.8:1 and will raise the compression on an LT1 to 10.4:1. CNC-matched 195cc intake and 75cc exhaust ports.

DESCRIPTION	PART NO.
95-96 LT4 and upgrade for 92-97 LT1 - Complete (single)	61939
95-96 LT4 and upgrade for 92-97 LT1 - Bare (single)	61929



#61939 Deck

PERFORMER RPM HEADS for Big Block Chevy

Edelbrock offers heads for the 396-502 family of Chevrolet engines in either oval or rectangular port configurations. The 60459 oval port head utilizes 290cc intake ports and a semi-open chamber design that excels in engines with streetable compression ratios. The 60559 rectangular port head features an 118cc open chamber and high velocity 315cc long/300cc short intake ports. Both heads work with all generations of Chevy blocks.

DESCRIPTION	Polished	Standard Finish
BB Chevy Performer 454 Oval Port, 110cc Chamber - Complete	604519	60459
BB Chevy Performer 454 Rectangular Port, 118cc Chamber - Complete	605519	60559



#60459

PERFORMER RPM for Buick

Designed for 400, 430 and 455 c.i.d. Buick engines. Comes with 68cc combustion chambers which produce 9.2:1 compression ratio with stock pistons. Available bare or fully assembled and ready to bolt-on with high-quality stainless steel 2.125" intake and 1.75" exhaust valves. Accepts widely available small block Chevy adjustable rockers. High flow 130cc exhaust ports.

DESCRIPTION	PART NO.
400, 430 & 455 c.i.d. Buick - Complete (single)	60049
400, 430 & 455 c.i.d. Buick - Bare	60039



#60049

PERFORMER RPM HEADS for Chrysler

For 67-85 Non-emissions Chrysler 318-360 engines, features 63cc combustion chamber with 171cc intake ports & 83cc exhaust ports volume. Improved flow by 12% over stock. Includes phosphor-bronze valve guides, interlocking, ductile iron valve seats & 1-piece stainless steel valves.

DESCRIPTION	PART NO.
SB Chrysler 318-360 engines	60779



#60779

PERFORMER RPM HEADS for Chrysler 440

Designed for 1961-78 Chrysler 361-440 wedge engines, these heads offer bolt-on out of the box performance. Intake ports flow 290 cfm and exhaust flows 217 cfm at .600" lift. Features 1.55" heavy-duty valve springs for up to .600" cams.

DESCRIPTION	PART NO.
Chrysler 361-440 Wedge engines 84cc Chambers - Complete	60929



#60929

Some parts are not legal for sale or use in California on any pollution controlled motor vehicle.



Edelbrock Cylinder Heads

Cast at the ultramodern Edelbrock Aluminum Foundry, Edelbrock heads are made from A356 aluminum and heat treated to T-6 specs. Our state-of-the-art manufacturing facility uses the latest CNC machining centers for high-degree of accuracy. Features for all Edelbrock heads include: threaded inserts in rocker studs and exhaust manifold bolt holes for superior strength and durability; hardened seats and bronze valve guides; minimum 9/16" deck thickness; fully machined valve cover rails for a more consistent gasket seal and all Edelbrock heads are designed to accept high-lift cams.



#60359

PERFORMER HEADS for Ford

Edelbrock Performer 50-state street legal heads provide outstanding bolt-on performance for street high performance 1965-95 289, 302 and 351 Windsor V8s. Capable of 300+ horsepower when matched with the Edelbrock Performer Power Package. Performer heads #60359 have high-flow 2.02" intake valves for use with aftermarket pistons notched for valve clearance. Top-quality 3/8" rocker studs are included on complete heads. Bronze guides and hardened interlocking seats are included on all heads. Will not accept rail rockers.

DESCRIPTION	PART NO.
Street Legal Performer w/1.90" Intake Valves, 60cc	60329
Street Legal Performer w/2.02" Intake Valves, 60cc	60359
Street Legal Performer w/2.02" Intake Valves, 60cc, Machined for Fel-Pro Loc Wire™ Gasket	60279



#60259

PERFORMER RPM HEADS for Small Block Ford

Bolt-on horsepower for Ford 289, 302, and 351W engines. Delivers maximum power in the 1500-6500 rpm range for high performance street applications. The 60229 head utilizes 1.90" intake valves to provide adequate clearance for stock piston configurations. 60259 requires aftermarket pistons notched for valve clearance. Head bolt bushings #9680 and #8552 head bolt kit or stock 7/16" head bolts required for 289-302 engines.

DESCRIPTION	Polished	Standard Finish
SB Ford 289-351W, 60cc Chamber - Complete	---	60229
SB Ford w/2.02 Intake Valves, 60cc Chamber - Complete	602519	60259



#60379

PERFORMER 5.0/5.8L HEADS for Small Block Ford

Direct bolt-on heads for 1982-95 5.0L and 5.8L (351W) V8s originally equipped with pedestal mount rocker arms. They accept 1982-95 5.0L V8 pedestal mount rocker arms and valvetrains. 1.90" intake valves are for use with stock pistons and 2.02" intake valves are for aftermarket pistons notched for valve clearance. These heads will not accept rail rockers.

DESCRIPTION	PART NO.
Performer 5.0/5.8L with 1.90" intake valves	60379
Performer 5.0/5.8L with 1.90" intake valves machined for Fel-Pro Loc Wire gasket	60289
Performer 5.0/5.8L with 2.02" intake valves	60399
Performer 5.0/5.8L with 2.02" intake valves machined for Fel-Pro Loc Wire gasket	60299



#60069

PERFORMER RPM HEADS for Ford FE Applications

Direct bolt-on replacements for the 1961-76 390-427-428 Ford FE family. Heads feature 2.09" and 1.66" valves and weigh in at 18lbs lighter than stock heads. Valve springs are 1.55" diameter and will accommodate .600" lift cams. Rocker Shaft Stud Kit #6009 is recommended for better rocker shaft retention.

DESCRIPTION	PART NO.
Ford FE 390-427-428 72cc Chambers - Complete	60069
NASCAR Legal - Bare	60087



#60679

PERFORMER RPM HEADS for Ford 429/460

Designed for 1968-87 429/460 Fords, these heads are equally well suited for drag racing, street performance and marine applications. These heads are capable of 500+ horsepower and 525+ ft/lbs of torque! Requires use of 3/8" pushrods.

DESCRIPTION	PART NO.
Ford 429/460 75cc Chambers - Complete	60679



#60579

PERFORMER RPM HEADS for Pontiac

Designed for 65-79 389-455 c.i.d. Pontiac engines, these heads are patterned after the 69-70 Ram Air IV Pontiac cylinder head. Two styles are available: a street legal 87cc combustion chamber version for low compression application using 92 octane fuel and a 72cc chamber version for higher compression, racing applications. Both heads have Ram Air IV exhaust port flanges.

DESCRIPTION	PART NO.
Street Legal Performer RPM, 87cc	60579
Performer RPM, 72cc	60599
Performer RPM, 72cc (semi-machined) - Bare	60509